

REAL CHOICE BETTER SOLUTIONS



ENCORE 

At the forefront of the commercial

laundry industry for over 65 years.

HERITAGE OF SUCCESS

Laundrylux has a proven track record of supporting our partners towards their success. For over a decade, Encore Pro front load washers and dryers have been a trusted choice, delivering reliable performance in laundry rooms across North America.

Our Encore Pro top load washer offers multi-housing providers a real choice and better solutions.

WHY ENCORE PRO?

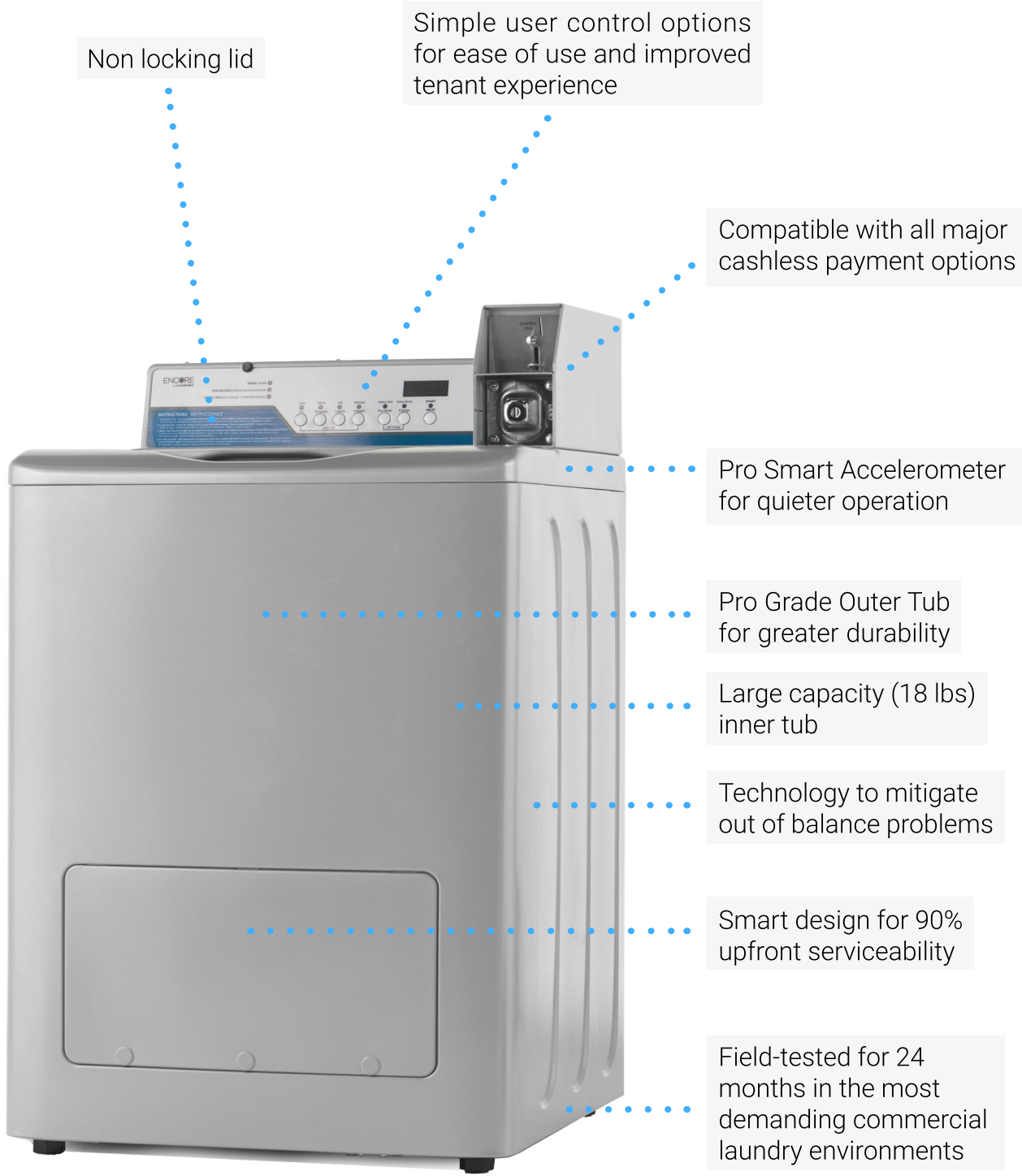
The industry has provided few options within the top loader space and even less choice for a PRO model to meet the multi-housing marketplace's growing demand.

Manufacturers have been masquerading home-style machines with coin boxes or cashless payment options as commercial-grade for too long.

Encore Pro: the first top load washer engineered for multi-housing providers and designed with property owners and tenants' needs in mind.

**Finally, the top load washer
you have been waiting for**

**REAL CHOICE
BETTER SOLUTIONS**



Non locking lid

Simple user control options for ease of use and improved tenant experience

Compatible with all major cashless payment options

Pro Smart Accelerometer for quieter operation

Pro Grade Outer Tub for greater durability

Large capacity (18 lbs) inner tub

Technology to mitigate out of balance problems

Smart design for 90% upfront serviceability

Field-tested for 24 months in the most demanding commercial laundry environments



TOP LOAD WASHER ENGINEERED FOR MULTI-HOUSING





Five years of design and real world testing, the Encore Pro top load washer is ready to work for you and your tenants.

- Engineered specifically for multi-housing
- Compatible with all cashless payment options
- Rigorously tested to outperform and over-deliver with a rich style that improves the look of any laundry room
- 5-year bumper-to-bumper parts warranty begins at time of installation

SMART DESIGN FOR A BETTER EXPERIENCE



Simple, intuitive, and easy to use, our top load washer features a smart design to give laundry room users a better experience.

- **Non-Locking Lid** for your convenience
- **Simple Select Control** puts the right wash options at users' fingertips, eliminating common user cycle choice error and improving the wash experience
- The **Easy Access Repair Panel Design** offers 90% serviceability from the front of the machine




Add value with revenue upgrade options



ENGINEERED FOR LONGEVITY


Central laundry rooms demand longevity and performance. The Encore Pro top load washer is built with professional-grade components to meet that challenge, year after year.

- The **Pro Smart Accelerometer** improves drum balancing and reduces noise
 - **Pro Grade Outer Tub** for greater durability
 - Tested for trouble-free performance at 10,000+ cycles
 - Robust construction that outlasts the competition with true industrial-grade engineering for superior performance, longevity, and reliability
 - Multi-layer paint application for maximum fit and finish to reduce chipping. Keeping the machines looking newer for longer and enhancing the design of laundry rooms.
- 

QUICK START GUIDE

1. Add Detergent/Fabric Softener


- Pour detergent into tub and softener into center cup of dispenser without touching.



- Close lid, select cycle and wash options.
- Pay and press START.


2. Add Laundry / Garments

- Allow water to fill for 30 seconds and dilute detergent before adding laundry.
- Open lid and add laundry. **DO NOT LOAD HIGHER THAN AGITATOR BLADES.**
- Close lid and press START to resume cycle.



3. Add Bleach

- After 5 minutes Bleach can be added to tub, if desired.



- Close lid and press START to finish cycle.

TECHNICAL SUPPORT
 1-800-828-1234

ENCORE
 by LaundryLux

ADD BLEACH AFTER
 RINSE / SPIN ENJUAGUE 1

INSTRUCTIONS INSTRUCCIONES

1. Press power 1-6 - 2 cup detergent into bottom of tub. Pour softener 1/4-1/2 cup in center cup of tub. Do not touch agitator blades. Pay and press START.

2. Load laundry. Close lid, select CYCLE & wash OPTIONS. Pay and press START.

3. When ADD BLEACH light is on, open lid and pour bleach into center cup of tub. Close lid and press START.

4. For DE-CATES, add detergent and laundry and wash clothes. Pay and press START. Pay and press START. Pay and press START.

! WARNING

! AVERTISSEMENT

! ADVERTENCIA

Quarters
 Day




A PARTNER YOU CAN TRUST

As a third-generation family business, Laundrylux understands the importance of building long-term sales partnerships. Choosing Laundrylux means choosing a team that will help you succeed and earn more worry-free revenue.

- Flexible financing packages
- Exceptional sales and after-sales support
- Concierge customer care
- Complimentary marketing services
- 5-year hassle-free parts warranty



ENCORE
by Laundrylux

WASH LAVAR ●

ADD BLEACH AÑADIR BLANQUEADOR ●

RINSE / SPIN ENJUAGUE Y CENTRIFUGADO ●

INSTRUCTIONS INSTRUCCIONES

1. First pour 1/4 - 1/2 cup detergent into bottom of tub. Pour softener into center cup. Primero agregue 1/4-1/2 taza de detergente al fondo de la lavadora. Agregue el suavizante dentro del contenedor central.
2. Load laundry. Close lid. Select CYCLE and OPTIONS wanted. Pay and press START. Cargue la ropa. Cierre la tapa. Seleccione el CICLO y OPCIONES deseados. Pague y presione INICIO.
3. When ADD BLEACH light is on, open lid and pour bleach into water (not on clothes). Close lid and press START. Cuando la luz de AÑADIR BLANQUEADOR esté encendida, abra la tapa y añada el blanqueador sobre el agua (no sobre la ropa). Cierre la tapa y presione INICIO.
4. For DELICATES, add detergent and softener and start washer WITHOUT laundry for 30 seconds. Then load laundry and hit START again. Para productos DELICADOS, agregue detergente y suavizante y encienda la lavadora SIN carga por 30 segundos. Luego cargue la ropa y presione INICIO nuevamente.

Cold ● Frio	Warm ● Templado	Hot ● Caliente	Delicate ● Delicado	Heavy Soil ● Muy Sucio	Extra Rinse ● Enjuague	START ● INICIO
CYCLES				OPTIONS		

A close-up, high-angle view of the interior of a washing machine drum. The drum is white and features a central softener dispenser. The dispenser is a circular white cap with a central opening and is labeled "SOFTENER DISPENSER" and "LITRE". The drum's interior is perforated with numerous small holes. The lighting is bright, highlighting the metallic and plastic textures.

A complete offering

of professional products

A partnership with Laundrylux gives you access to our complete family of professional products.

With our Encore Pro top load washer and Encore Pro front load lineup, multi-housing providers now have access to a full suite of products including our Wascomat professional line to meet the needs of every tenant and every laundry room.

ENCORE



Top Load Washer



Front Load Dryer



Front Load Washer



Stack Washer-Dryer
or Dryer- Dryer



Soft Mount Washer



Stack Dryers



THE POWER OF PRO

The Encore Pro Front Load offering is the laundry industry's most powerful – and reliable – lineup of washers and dryers.

- Our front load washer is **factory-tested for 15,000+ cycles** – 3 times more than residential appliances, making it the most reliable small chassis washer on the market.
 - Our ENERGY STAR® certified equipment delivers **real long-term cost savings**.
 - With robust construction, we deliver greater longevity, ease of maintenance, and low running costs.
 - Service calls are faster and less costly with our front accessible panel.
 - With over 12 years of commercial in-market experience, the Encore Pro is the smartest choice.
- 



Dispenser
Softener
Fabric softener
Bleach
Bleach
Bleach

Cancel Start Stop Delicate Heavy Soil Rinse Start
Normal Turbo Clean Deep Soak Eco Save Sensor

Pro-Temp Retaining
Pro-Temp

ENCORE
by Maytag

Load washer and close. All detergent, softener, bleach and fabric softener should be added to the dispenser. Do not overfill. Do not use bleach and fabric softener together. Do not use bleach and fabric softener together. Do not use bleach and fabric softener together.

FRONT LOAD WASHER

Heavy-duty pull-out drawer with compartments for liquid or powder detergent, liquid fabric softener and liquid bleach

2 cycle upgrade buttons for enhanced revenue — Heavy Soil and/or Extra Rinse

ADA compliant and ENERGY STAR® certified



Extra large door opening for easy loading and unloading

Superb clean ability with 4 field adjustable wash programs

Pump drain standard

Solid steel counterweights — no concrete

AC Motor (No brushes)

Coin/card payment or OPL

Extra large, high-security coin box

300 G-force spin for greatest water extraction and faster dry time

Extra large load 3.5 cu. ft. drum — 22+ pound capacity

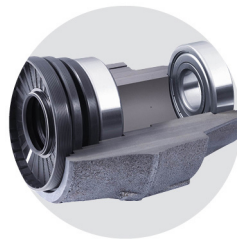
Superior over-suds and unbalance tolerance

Saves up to 60% on water vs. top load washers

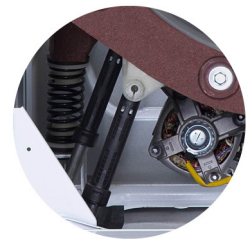
Soft-mount design for easy installation



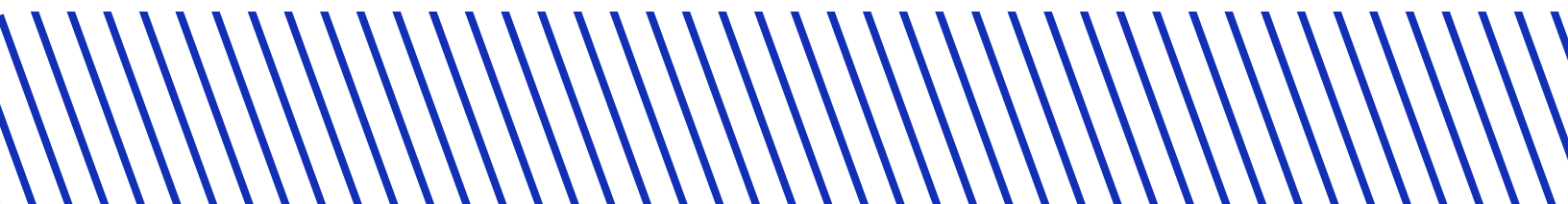
**15,000+ CYCLES
MACHINE LIFE**



**CAST IRON
SKF BEARINGS**



**8-POINT
SUSPENSION**



FRONT LOAD DRYER

Easy-to-use push button controls with digital display

Coin/card payment or OPL

Extra large, high-security coin box

Extra large door opening for easy loading and unloading

Axial airflow for efficient drying

Easy to clean, heavy-duty lint screen

Extra large load 7.0 cu. ft. drum – 22+ pound capacity

Commercial grade components

Large capacity handles oversized loads with ease



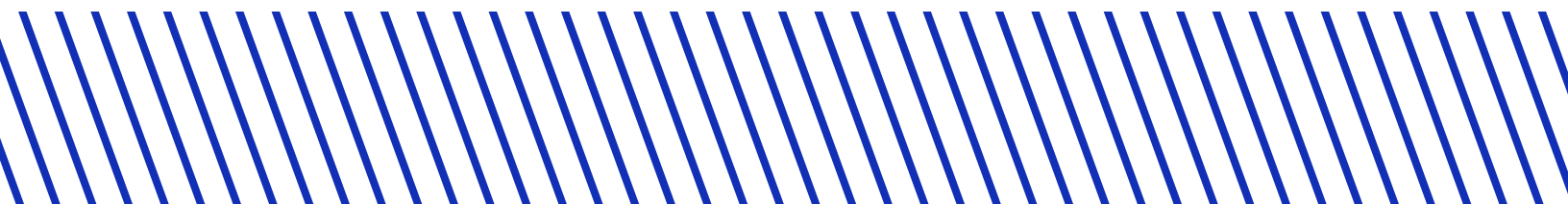
AXIAL AIRFLOW



ROLLER SUPPORTED TUMBLER



TIME-OF-DAY PRICING



ENCORE 
THE BETTER CHOICE

 **LaundryLux**
Distribution

www.laundryluxdistribution.com